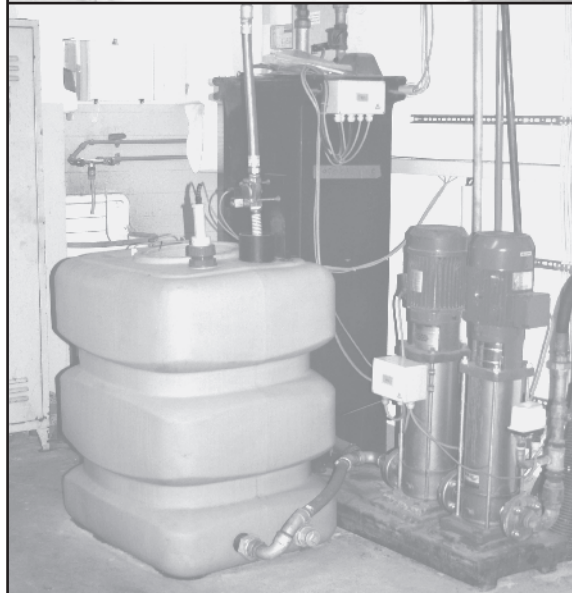
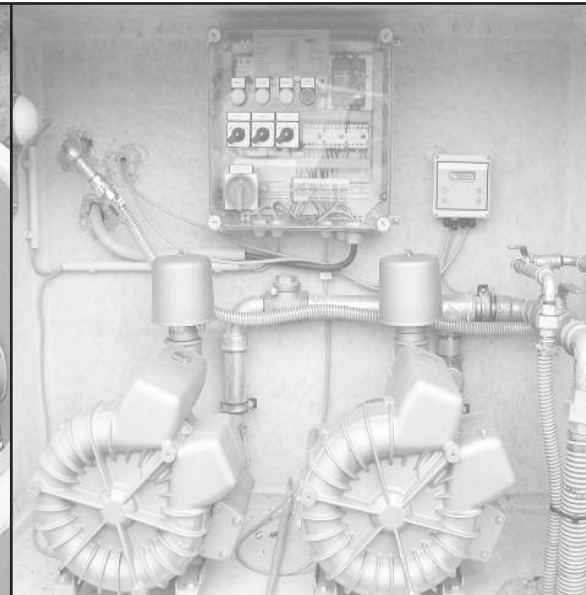


Treatment of washing water
as per annex 49 of the
German Waste Water Ordinance
Treatment of circulation water



NEUTRAtwin pre-treatment tank Sludge trap and pre-separator with standard-compliant internal coating

In one unit, as part of a system for waste water and circulation water treatment, for the retention of sinking and floating materials for maximum relief and protection of downstream system technology.

Volume l	Inner Ø d mm	Total depth H mm	Inlet depth T _{min} mm	h mm	Nominal width DN	Sludge trap volume l	Oil storage volume l	Heaviest single part kg	Total weight kg	Article no. cl. D 400
6600	2000	3265	980	2290	150	5000	1550	6.240	8.700	1.5546.101
8700	2500	2915	980	1940	150	5000	2430	10.040	10.750	1.5546.111
10000	2500	3270	980	2290	150	6500	2430	8.060	11.570	1.5546.116
14700	3000	3195	1005	2190	150	10800	3510	11.490	17.155	1.5546.121
22800	4000	3040	1100	1940	200	15500	7300	8.600	30.045	1.5546.440

S V Model with cover plate

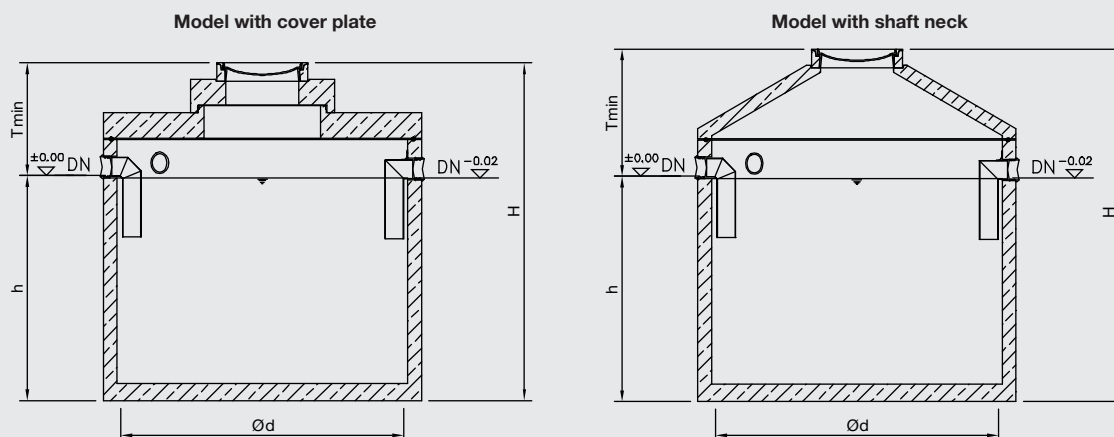
6600	2000	3265	980	2290	150	5000	1550	6.240	8.700	1.5546.101
8700	2500	2915	980	1940	150	5000	2430	10.040	10.750	1.5546.111
10000	2500	3270	980	2290	150	6500	2430	8.060	11.570	1.5546.116
14700	3000	3195	1005	2190	150	10800	3510	11.490	17.155	1.5546.121
22800	4000	3040	1100	1940	200	15500	7300	8.600	30.045	1.5546.440

S V Model with shaft neck

6600	2000	3395	1105	2290	150	5000	1550	6.240	7.810	1.5546.201
8700	2500	3045	1105	1940	150	5000	2430	7.240	9.220	1.5546.211
10000	2500	3395	1105	2290	150	6500	2430	8.060	10.040	1.5546.216

- Dimensions apply to cl. D 400 cover. With cl. B 125 cover, the inlet depth (T_{min}) and total depth (H) are reduced by 35 mm and the total weight by 80 kg.
- In order to increase the inlet depth (T_{min}), attachments as per DIN 4034, part 1 are available.
- Factory-installed, resilient sealing elements compatible with plastic pipes (e.g. HDPE, PP) for the articulated pipe connection.
- Additional pipe connections upon arrangement.
- Technical equipment for automatic sludge discharge on request.

For freight groups and transport prices on request.



NEUTRAclear washing water treatment system as per annex 49 of the German Waste Water Ordinance

Treatment of washing water for portal car wash facilities, car wash plants and commercial vehicle wash facilities.
Compatible with all vehicle-washing systems which use service water.

- With German national technical approval
- Quality-controlled prefabricated structure, made of jointless C35/45 (B45) reinforced concrete, strengthened for break resistance, with type-tested statics.
- Factory-installed, resilient sealing elements compatible with plastic pipes (e.g. HDPE, PP) for the articulated pipe connection.
- Filter body installed via reinforced concrete support grid.
- Mammoth pump and sludge extraction funnel for removal of floating material and waste biomass.
- With shaft superstructure as per DIN 4034 part 1, including pre-lubricated sliding ring seal.
- With shaft cover as per DIN EN 124 and DIN 1229.
- Side-channel compressor with factory-installed air diffuser and controller in weather-proof equipment box with lockable steel door.

Type	Inner ø d mm	max. Waster water zufluss l/min	Electr. connected load 400 V/50Hz	max. Waster water belastung kg BSBs/d	Heaviest single part kg	Total weight kg	Article no. cl. D 400
C 1500 ¹	1500	100	0,75 kW	3,23	5.475	7.435	1.5820.003
C 2000 ¹⁾	2000	180	1,1 kW	8,15	8.200	11.000	1.5820.015
C 2500 ¹⁾	2500	280	2,0 kW	12,66	11.025	14.875	1.5820.021
C 3000 ¹⁾	3000	530	2 x 2,00 kW	18,24	17.120	24.210	1.5820.031
C 4000	4000	760	2 x 3,00 kW	29,59	9.400	33.505	1.5820.445

- The system is pre-assembled in the factory. Final installation and commissioning is performed by Mall as part of the installation service.
- Dimensions apply to class D 400 cover
- With class B 125 cover, the total weight is reduced by 80 kg.
- Transport costs and other heights or inlet depths on request.

Dimensional criteria

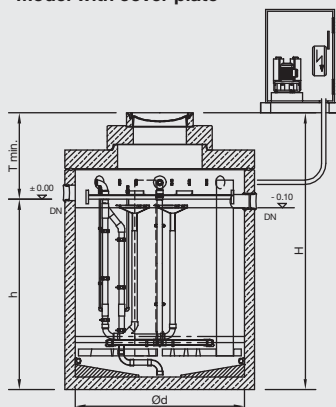
1. Waster water volume

- Number of wash
- Pre-washes
- Additional waster water volume
- Pump capacity

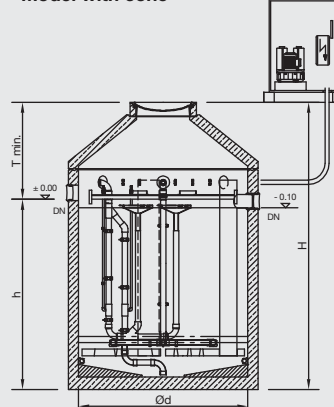
2. Waste water contamination

- Wash process, wash programme
- Composition and combination of the wash chemistry
- Wash chemistry dose / vehicle
- Operating conditions

Model with cover plate



Model with cone



NEUTRASam storage basin for service water for NEUTRAclear circulation water treatment system

Mit Drucklufttheber zur Beckenbelüftung.

Volume l	Inner Ø d mm	Total depth H mm	Inlet depth T _{min} mm	h mm	Nominal width DN	Heaviest single part kg	Total weight kg	Article no. cl. D 400
2500	1500 ¹⁾	2275	765	1550	150	4.020	5.590	1.5520.121
5000	2000	2720	1015	1740	150	7.540	8.345	1.5520.151
10000	2500	3325	1085	2240	200	8.080	11.650	1.5520.161

E Model with cover plate

E Model with shaft neck

2500	1500	2655	1145	1550	150	4.020	5.400	1.5520.221
5000	2000	2845	1145	1740	150	5.790	7.500	1.5520.251
10000	2500	3455	1215	2240	200	8.080	10.069	1.5520.261

¹⁾ Model without transition plate.

- Dimensions apply to cl. D 400 cover. With cl. B 125 cover, the inlet depth (T_{min}) and total depth (H) are reduced by 35 mm and the total weight by 80 kg.
- In order to increase the inlet depth (T_{min}), attachments as per DIN 4034, part 1 are available.
- The dimension T is determined according to the upstream separator's outlet depth, but can also be adjusted in individual cases.
- Factory-installed, resilient sealing elements compatible with plastic pipes (e.g. HDPE, PP) for the articulated pipe connection.
- Feed-throughs for pipes and electrical cables upon arrangement.
- Larger systems and customised versions on request.

For freight groups and transport prices on request.

Options for NEUTRAclear circulation water treatment system

▪ Above-ground storage basin for service water

For intermediate storage of treated circulation water in a second service water basin, so as to enable connection of one or more pumps for feeding a vehicle-washing system.

Consisting of: Submersible motor-driven pump, service water basin with fresh water make-up, switch cabinet with control system.

- Conductivity monitoring and control
- Rainwater utilisation

Vertical rotary pump

For pumping the treated wash water from the above-ground storage basin for service water to the vehicle-washing system.

Optional booster station

The station supplies one or more consumers (taps, high pressure cleaning device) with wash water or rainwater at the required volume and pressure.

