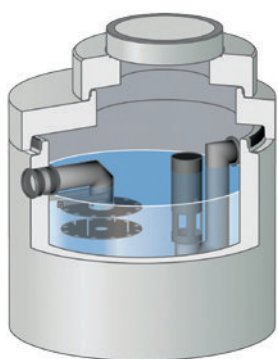


# NeutraSpin coalescence separator



Z-54.3-518



## NeutraSpin NS 3-30

### Class I coalescence separator and sludge trap

#### The all-rounder for tough operating conditions

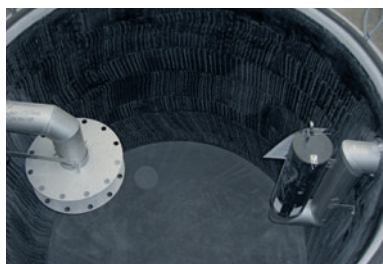
The EN 858 and DIN 1999-100/-101-compliant light liquid separator NeutraSpin is a logical progression from the existing product range: With its robust drain design, it combines proven principles with state-of-the-art coalescence technology.

The system design is simple and consists of one inlet and one outlet part and a monolithic main tank. That makes it easy to access at any time for maintenance purposes.

The separator has a free spherical passage (diameter > 150 mm), a self-closing mechanism at the outlet and a sludge trap with a proven float design. The float is inside a guide pipe. This pipe guides the float to the outlet seal which defines the float position of the float.

#### Implementation

- Filling and transfer areas, e.g. petrol stations
- Municipal cleaning companies
- Municipal vehicle washing stations
- Washing stations where green waste can also accumulate
- Draining unloading or storage spaces, where granular materials or solid fine materials are handled
- Scrapyards



#### Advantages at a glance

- + Self-closing mechanism at the outlet
- + High light liquid storage volume
- + Compliant with Drinking Water Ordinance (TVO)
- + Optimal separation of sediment
- + Suitable for biodiesel, an approval application has been submitted
- + Filterless class I separator with integrated sludge trap
- + Free spherical passage diameter of at least 150 mm
- + Coalescence insert does not have to be replaced
- + Self-cleaning, maintenance-free coalescence device

